



# JS ENGINEERING WORKS

PRECISION MANUFACTURING SOLUTIONS

Manufacturer and exporter of high-quality power transmission components, precision gears, shaft locking devices, and custom CNC machined parts. Equipped with LMW CNC machines. Delivering engineering excellence since 1995.

**30+**

YEARS EXPERIENCE

**500+**

PRODUCTS

**50+**

HAPPY CLIENTS

**14**

OPERATIONS

## About JS Engineering Works

Founded in 1995 in Delhi, JS Engineering Works is a leading manufacturer and exporter of outstanding industrial solutions. Under the brand name "JSE" and the guidance of our mentor, Mr. Jai Prakash Pal, we deliver premium quality power transmission components, precision machined parts, and custom engineering solutions that meet global standards. Equipped with LMW CNC machines, our state-of-the-art machinery, industry knowledge, and highly trained workforce ensure a professional approach in every project.

## Why Choose JSE?

- ✓ Full customization to your specs
- ₹ Cost-effective solutions
- ♥ Customer-focused approach
- ✂ Excellent after-sales service
- ⚡ Quick delivery for breakdown jobs
- ★ Superior quality standards
- 🌐 Wide market presence
- ⚙ Stringent quality checks

## Our Services



### ENGINEERING

Integrated design solutions tailored to your unique requirements



### MANUFACTURING

Reduce costs and speed products to market with precision



### CNC MACHINING

Advanced CNC machining and precision tooling for custom parts



### CONSULTING

Expert guidance from concept to implementation



### MAINTENANCE

Cost-effective maintenance for smooth operations

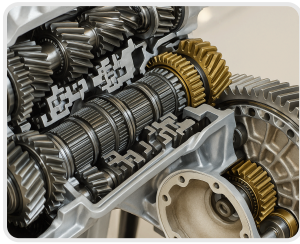


### QUALITY ASSURANCE

Every item undergoes stringent quality checks

## 14 MANUFACTURING OPERATIONS

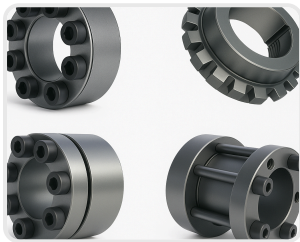
Drilling   Tapping   Boring   Turning   Milling   Grinding   Gear Cutting   Broaching   Reaming  
Threading   Honing   Lapping   EDM   CNC Operations



## Power Transmission Components

We manufacture a comprehensive range of power transmission components including gear racks, pinions, splines, sprockets, and worm gears to American standard, metric, and circular pitch systems. Services include milling, matching gear racks for continuous travel, precision sawing, drilling, tapping, broaching, countersinking, and finishing.

- [Gear Racks](#)
- [Pinions](#)
- [Splines](#)
- [Sprockets](#)
- [Pulleys](#)
- [Couplings](#)
- [Bushes](#)



## Shaft Locking Devices

We offer a comprehensive line of precisely engineered keyless bushings to make your operation more efficient. Our product line offers quick and easy installation with design flexibility and extra heavy-duty capacity. Choose from a broad range of options to fit standard-sized shafts.

- [Keyless Bushings](#)
  - [Locking Assemblies](#)
  - [Clamping Elements](#)
  - [Shaft Couplings](#)
- [Precision Bushes](#)



## Gears

Manufacturer of spur gears, helical gears, coarse and fine pitch gears, shaped and hobbled gears, segment gears, pinion shafts, small and large gears, single/double/triple/quadruple lead worms and worm gears, internal spur gears, and straight and spiral bevel gears — in any quantity.

- [Spur Gears](#)
  - [Helical Gears](#)
  - [Bevel Gears](#)
  - [Worm Gears](#)
  - [Segment Gears](#)
  - [Pinion Shafts](#)
- [Internal Gears](#)

## Materials We Work With

Mild Steel

Carbon Steel

Alloy Steel

EN-8 / EN-19 / EN-24

SS 304 / SS 316

Aluminum 6061

Brass / Bronze

Cast Iron

Copper

Tool Steel (D2/H13)

SAE 4140

20MnCr5

### Free Online Weight Estimator

Calculate material weight for any shape and alloy at

[www.jsengineeringworks.com/estimator](http://www.jsengineeringworks.com/estimator)

## What Our Clients Say

★★★★★

“

*JS Engineering Works supplied us with shaft locking devices and precision components that met exact tolerances. Delivery was on time and the quality was outstanding.*

### **Kay Blowers**

Industrial Equipment Manufacturer

★★★★★

“

*We are immensely gratified with the quality products and after sales services provided by M/s. JS Engineering Works.*

### **SNPC Machines**

Brick Making Machine Manufacturer

★★★★★

“

*Reliable supply of impeller shafts and blower components. JS Engineering Works understands the precision required for air handling equipment.*

### **A1 Blowers**

Air Blower Manufacturer

★★★★★

“

*We would like to appreciate M/s. JS Engineering Works for their technical support in different capacities. The performance of products is exceptionally good.*

### **Monika Enterprises**

Engineering Procurement

## Get In Touch



### ADDRESS

Delhi, India



### EMAIL

info@jsengineeringworks.com



### PHONE (INDIA)

+91 98990 75182



### PHONE (USA)

+1 (516) 737-8819

[www.jsengineeringworks.com](http://www.jsengineeringworks.com)

Request a quote online | Free weight estimator | Technical resources

BRAND NAME: JSE • ESTABLISHED: 1995 • FOUNDED BY: MR. JAI PRAKASH PAL